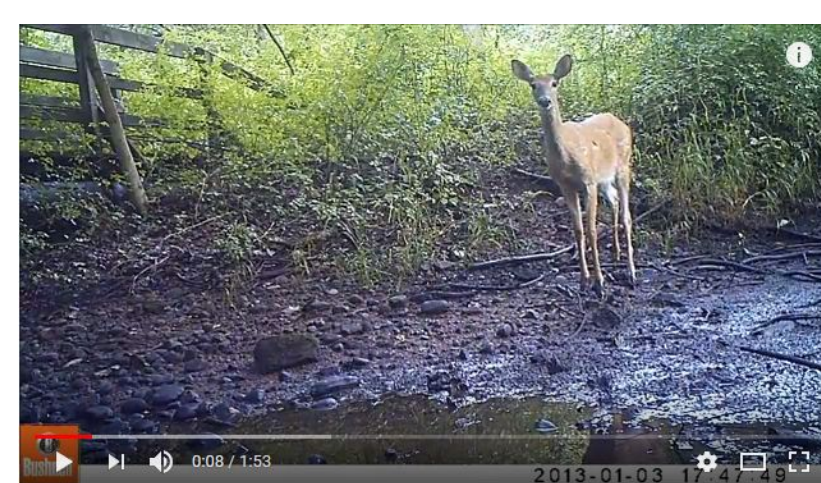


# Mapping Cheshire Land Trust's Fresh Meadows Wildlife Sanctuary



## Why Fresh Meadows?

- CT Land Trusts plays an important role in protecting 190,193 acres of land in CT.
- CLT stewards almost 600 acres in Cheshire; Fresh Meadows (32.8 acres) is an important wildlife corridor, abuts the Mill River, an important water body within the South Cheshire watershed and this land is also a popular site for the public to enjoy as a natural open space.
- Fresh Meadows Wildlife Sanctuary is one of CLT's properties & is important because now that we have created a Trail Map we can display it so people who go to the trail can look at it and know where to go, also to see what kinds of animal and plants there are to see.
- This project got me and my partner the experience to go out in nature and be a part of helping plants and animals.
- We created a digital trail map of Cheshire Land Trust's Fresh Meadows Wildlife Sanctuary which would be useful and informative to the public.

## Methods

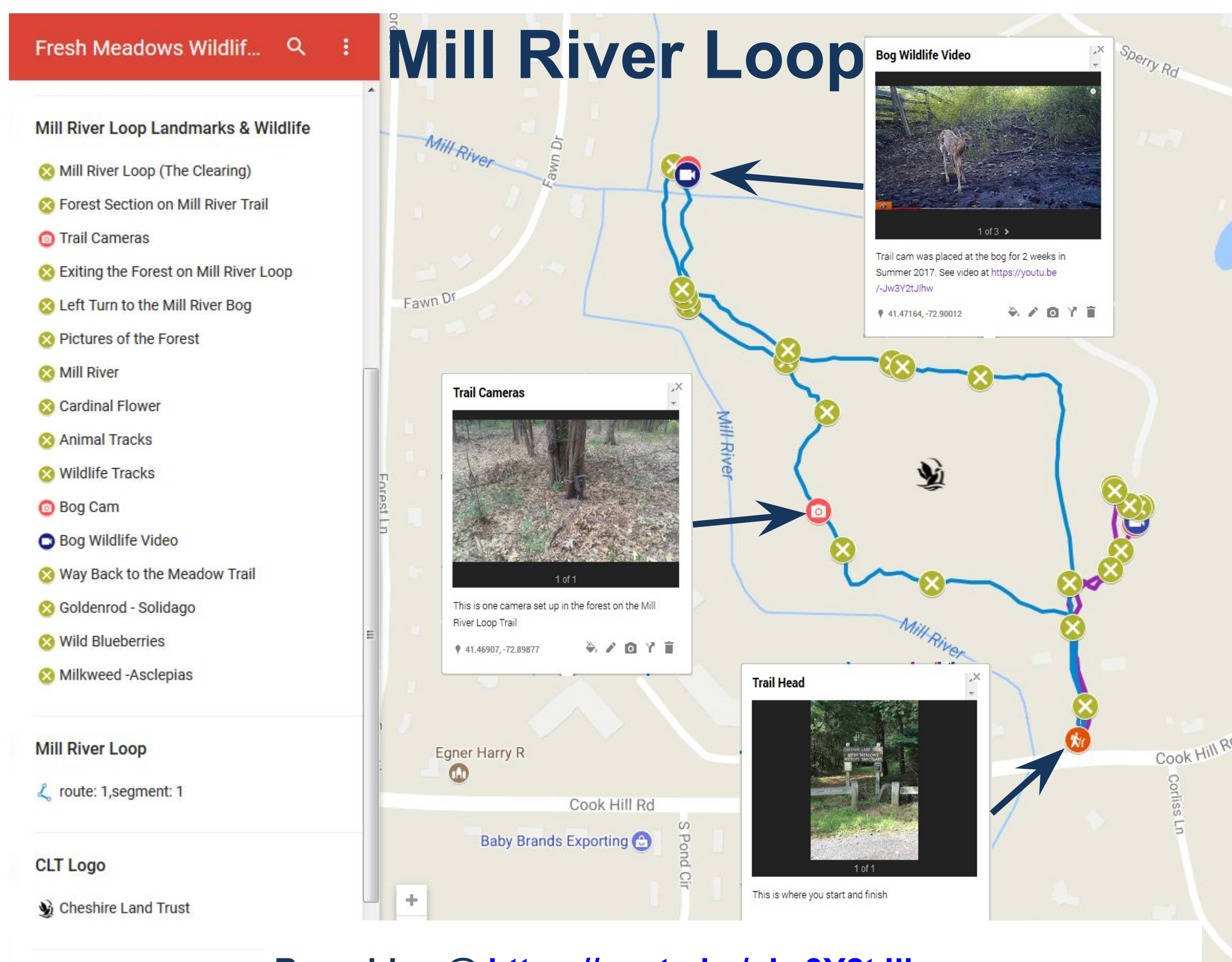
- Fresh Meadows Wildlife Sanctuary is located at Cook Hill Road, Cheshire, CT.
- Steps we took to complete the project were:
  1. Walked the trails to see the kinds of paths. We chose to map: (1) Ridge Trail & (2) Mill River Trail.
  2. Mapped 2 trails & took waypoints & pictures of wildflowers & natural features using Track Kit GPS (Fig. 1A; required multiple visits).
  3. Set up wildlife trail cams in the upland on the Ridge Trail (Fig. 1B) & in the bog on Mill River Trail (Fig. 1C) from August 2017 to January 2018.
  4. Imported tracks of trails & waypoints from Track Kit to Google Maps & tailored the map to have photos, videos and pop-up informational boxes about wildlife & features of the trail.



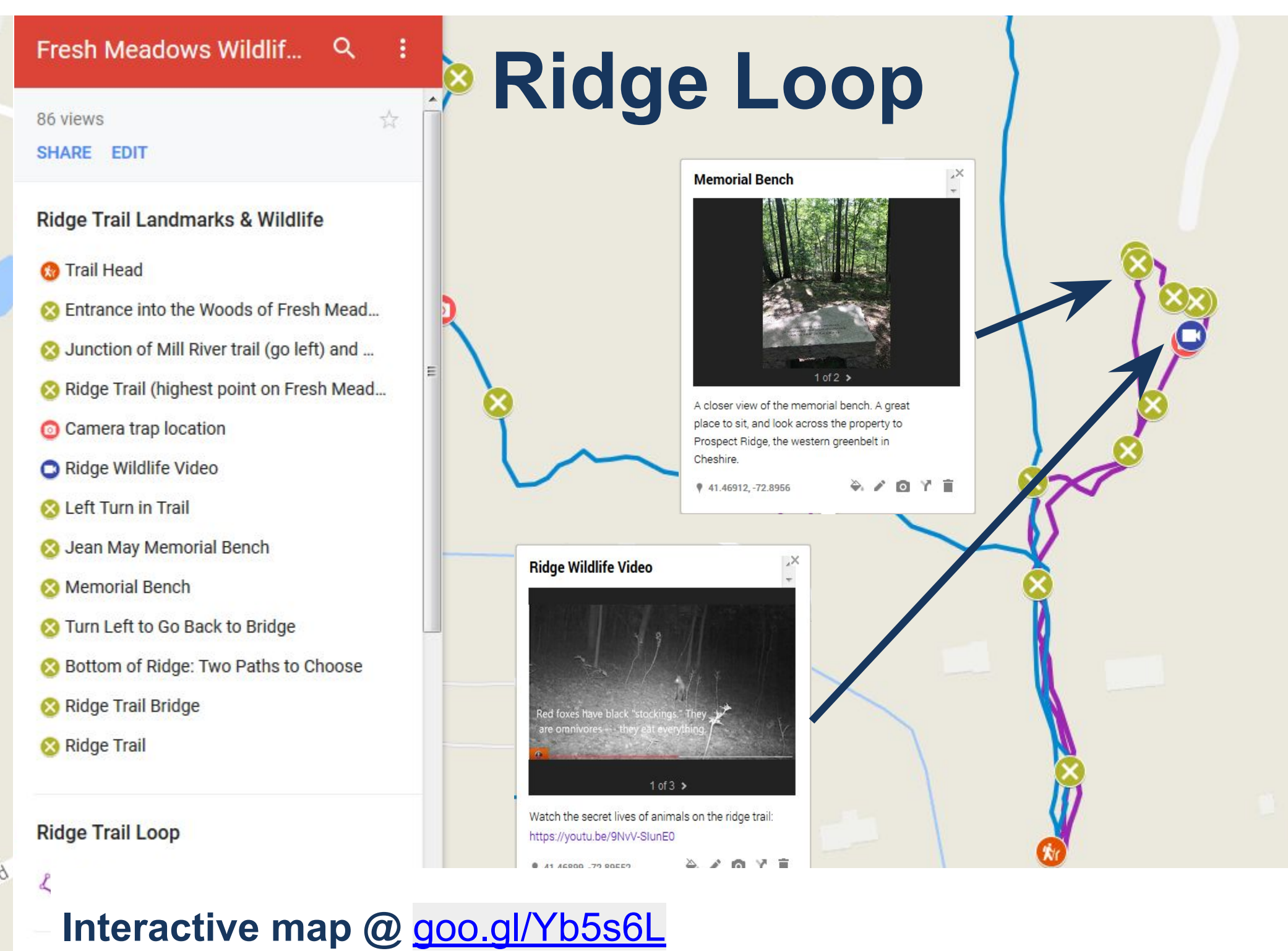
Fig. 1: (A) Taking pictures & waypoints of plants along trail using smartphone app Track Kit. (B) Assembling trail cam to put in upland site. (C) Gabby & Joy put up trail cam on tree at bog site!

## Interactive Map and Videos

This project resulted in an interactive map of 2 trails at Fresh Meadows. People can access the map on their phones by clicking a weblink or QR code. As they hike, they can navigate the trail & learn about the animals that use the trails. We also put together a few videos that the public can see that has information about each animal that walked by the trail cams.

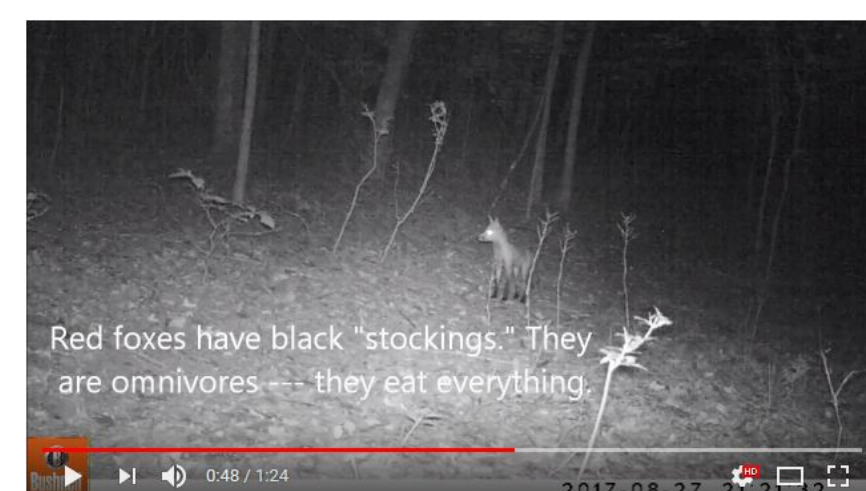
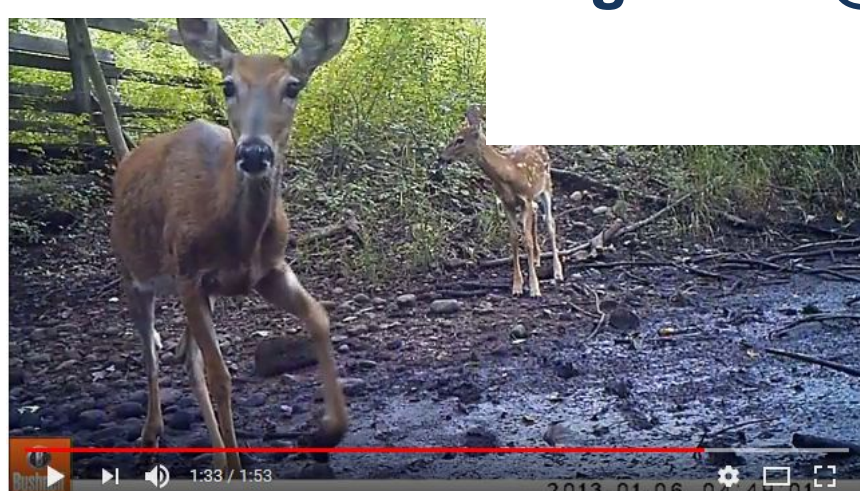


Bog video @ <https://youtu.be/-Jw3Y2tJlhW>



Interactive map @ [goo.gl/Yb5s6L](http://goo.gl/Yb5s6L)

Upland video @ <https://youtu.be/9NvV-SlunEO>



Gabrielle M. Pazzak | Joy VanderLek  
Lyman Hall Vo-Ag | Cheshire Land Trust

